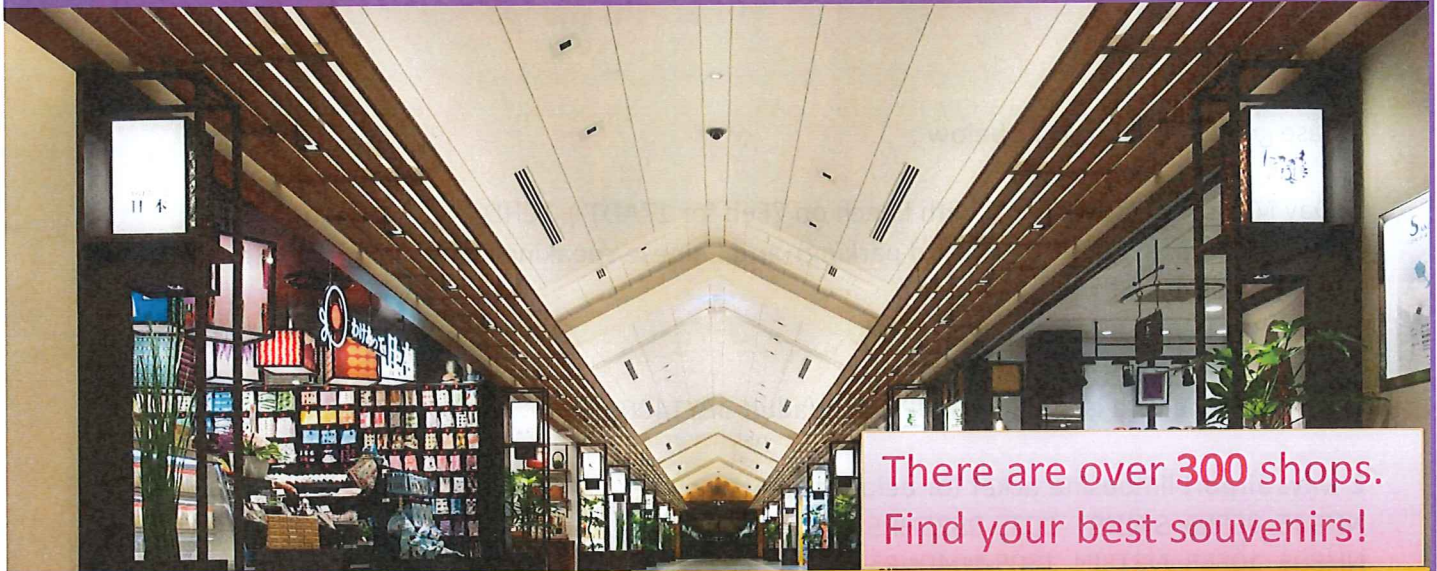


TOKYO SKYTREE® with Shopping Plan at TOKYO Solamachi®



There are over **300** shops.
Find your best souvenirs!

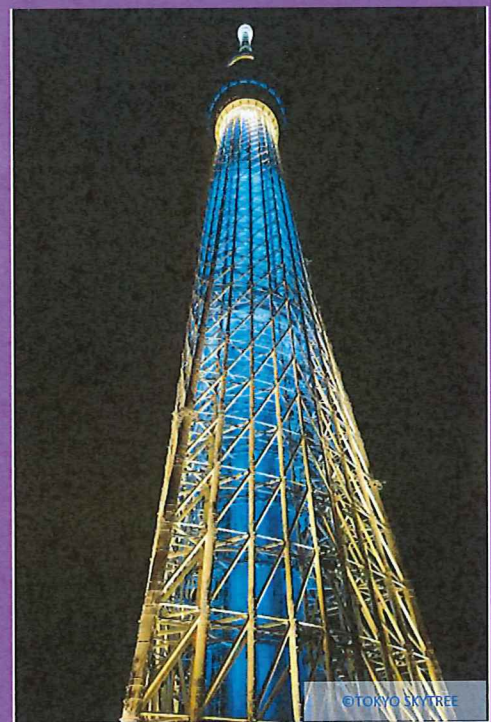
[INCLUDED]	(JPY)	CODE	ADULT (18+)	YOUTH (12-17)	CHILD (6-11)	EARLY CHILD (4&5)
TOKYO SKYTREE TEMBO DECK (350M)		AH0220B	3,900	3,400	2,700	1,900
TOKYO SKYTREE TEMBO DECK & TEMBO GALLERIA (350M&450M)		AH0220C	4,930	4,220	3,210	2,210

©TOKYO SKYTREETOWN

INCLUDED:

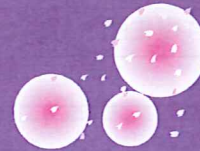
- EXCHANGE TICKET :**
FOR TOKYO SKYTREE TEMBO DECK (350m)
OR FOR TOKYO SKYTREE TEMBO DECK (350m)
& TEMBO GALLERIA (450m)
- GIFT CERTIFICATE JPY 1,000 (TOKYO Solamachi)**
- TOBU RAILWAY SECTION-LIMITED 1DAY PASS**

This Tokyo Skytree ticket is only specified the date you enter; not specified the time. Therefore, you can go up the Tokyo Skytree Tembo Deck & Tembo Galleria any time you want during its business hours.



APR.1.2016- SEP.30.2016

Day	Schedule	Meal
	<p>*There is NO GUIDE: SELF-ORGANIZED TOUR</p> <p>> TICKET COUNTER: *There are 2 ticket counter for pick up as below. Please choose one ticket counter only for all your customers. We will send the MAP of the ticket counter to you, after your booking confirmed.</p> <p>A: <u>TOBU SIGHTSEEING SERVICE CENTER IN TOBU ASAKUSA STATION</u> Business Hours:7:45am-5:00pm (*Closed Days:30th of DEC.-3rd of JAN.)</p> <p>B: <u>TOBU Group TOURIST PLAZA(located on 5/F at TOKYO Solamachi)</u> Business Hours:10:00am-9:00pm</p> <p>> With using Tobu Railway Section-limited 1day free pass to go to TOKYO SKYTREE®. Head to the Ticket Counter: TOKYO SKYTREE® Entrance Floor (Tower Yard, 4/F) >> Enjoy panoramic views and stare 350m or 450m straight down from the observatory (approx.,2hrs) >> Business Hours: 08:00am — 10:00pm (last admission 21:00pm)</p> <p>About Exchange TICKET for TOKYO SKYTREE: In case you CAN NOT enter TOKYO SKYTREE TEMBO DECK and TEMBO GALLERIA on the specified date, as a walk-in ticket within 30days, you can enter on another day.</p> <p>> Enjoy shopping at TOKYO Solamachi®. (Some shops do not accept coupons.) <i>There are over 300 shops. Find your best souvenirs!</i> >> Business Hours: 10:00am — 9:00pm</p> <p>> With using Tobu Railway Section-limited 1day free pass, enjoy great sightseeing spots on Tobu Railway Line: Unlimited Ride Zone: A) Between Tobu Asakusa Sta. and Kitasenju Sta. B) Between Hikifune Sta. and Kameido Sta. C) Between Hikifune Sta. and Oshiage Sta. e.g., Asakusa - - - - - Senso-ji Temple Kameido - - - - - Kameido Tenjin Shrine Higashi Mukojima - - - Tobu Railway Museum</p>	
1		N/A



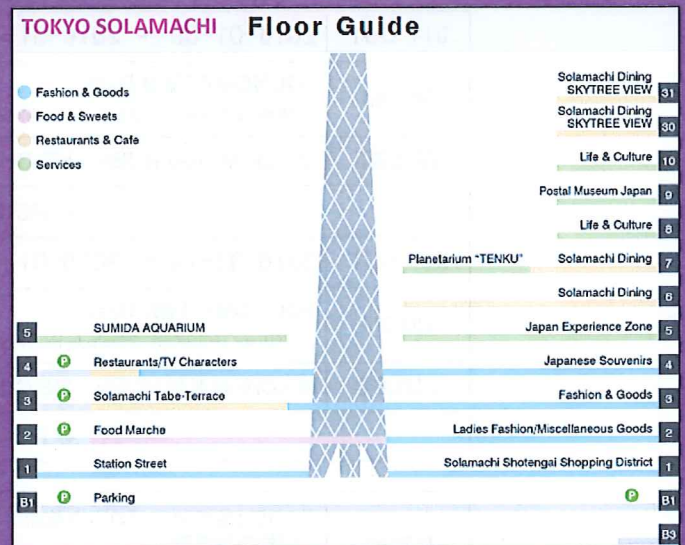
Tour Conditions :

- >Minimum number of participants required for the tour: 1
- > TOUR GUIDE: There is NO GUIDE: SELF-ORGANIZED TOUR

New Booking : Until 3 Business days before

CANCELLATION POLICY:
You are allowed to make a cancellation at any time by following and with NOT violating our cancellation policy

DAY YOU CANCEL (PRIOR TO DEPARTURE)	CANCELLATION PENALTY/CHARGE
MORE THAN 11DAYS PRIOR	NO PENALTY/ FREE
10-8DAYS PRIOR	20% OF FULL PYMENT
7-2DAYS PRIOR	30% OF FULL PAYMENT
1DAYS PRIOR	50% OF FULL PAYMENT
DAY OF DEPARTURE	100% OF FULL PAYMENT
NO-SHOW	100% OF FULL PAYMENT



【Applications and Inquiries】

TOBU TOP TOURS CO., LTD
INTERNATIONAL TRAVEL DEPT.
PHONE: +81-3-5348-2745 / E-mail: intl-asia@tobutoptours.co.jp

